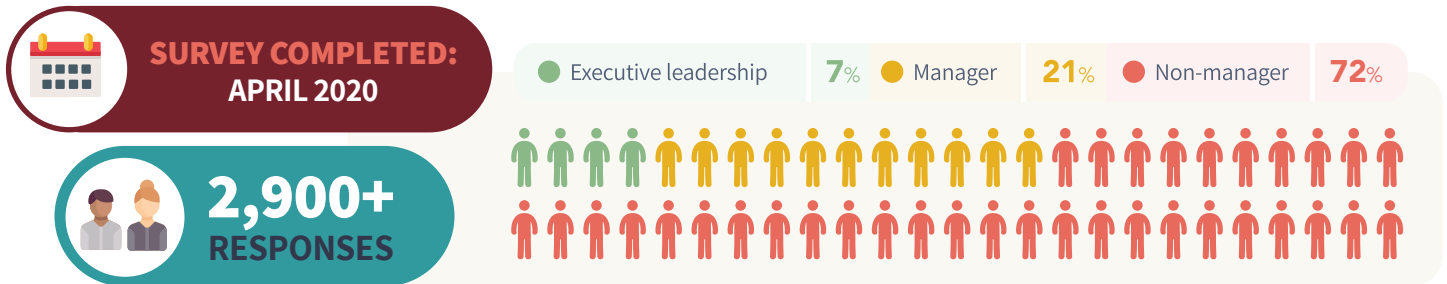


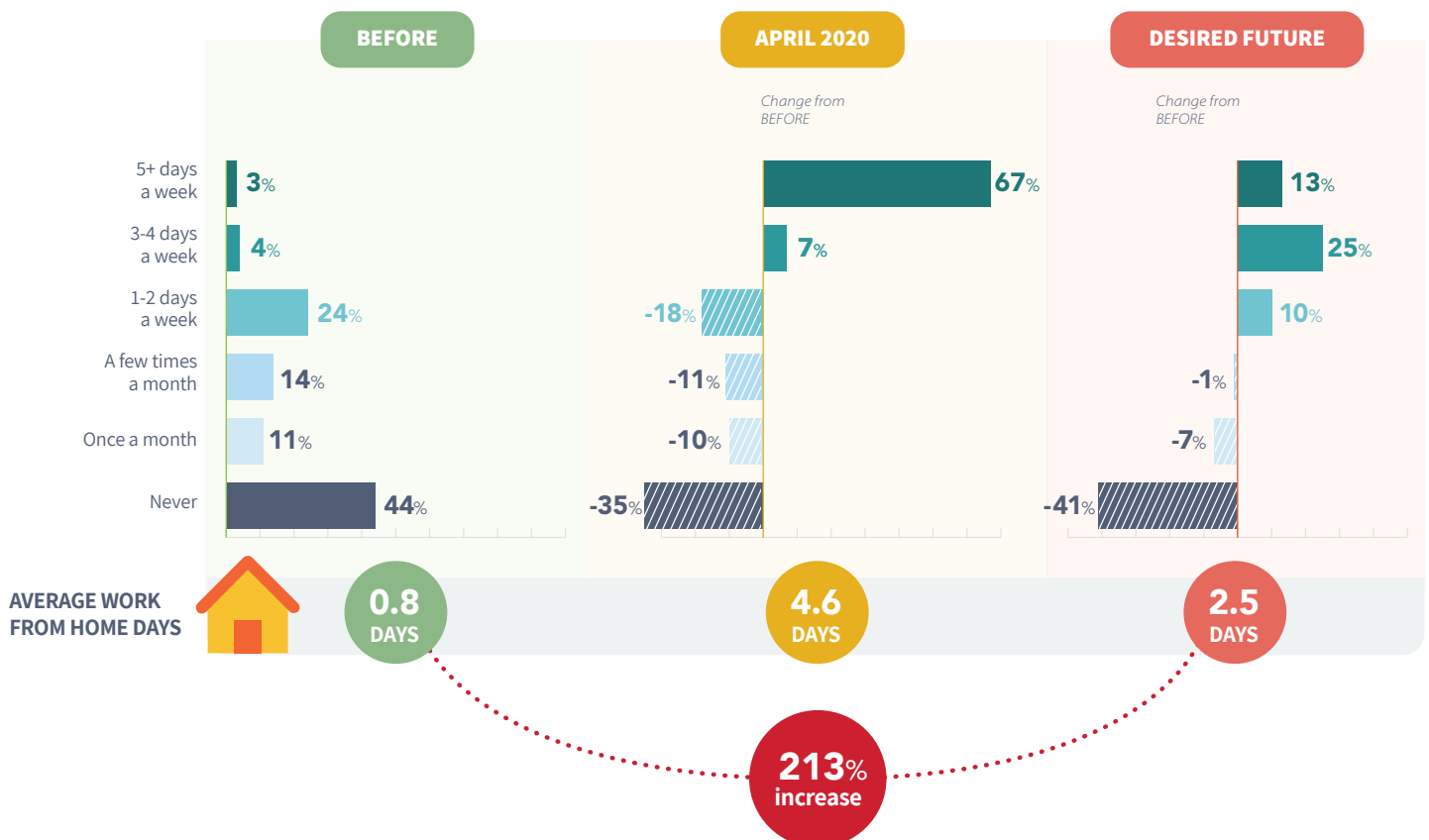
APRIL 2020 SNAPSHOT: REMOTE WORK IN ATLANTA REMOTE WORK SURVEY FINDINGS

Prompted by Georgia’s statewide shelter in place order, many companies throughout the Atlanta region transitioned their non-essential business operations to remote work. To understand the impacts of this shift, ASAP partnered with Georgia Commute Options to conduct a survey of metro Atlanta’s workforce, including executives, managers, and non-managerial employees. Questions were tailored to each group. This summary showcases our key findings.



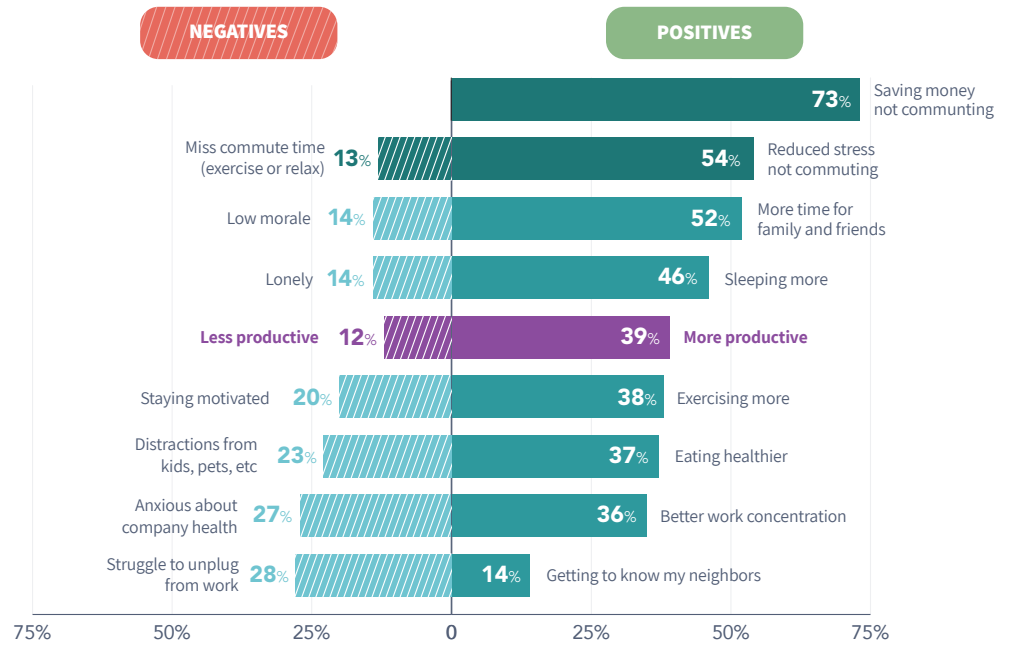
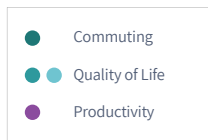
COMPARING WORK FROM HOME RATES

Survey respondents noted how frequently they worked from home before the pandemic. Those results are shown in the **BEFORE** below. They also reported current work from home rates at the time of the survey and how frequently they would like to work from home in the future. The **APRIL 2020** and **DESIRED FUTURE** columns each show the change in the percentage of employees working from home compared to the **BEFORE** column. The results are also calculated into an average number of work from home days per week.



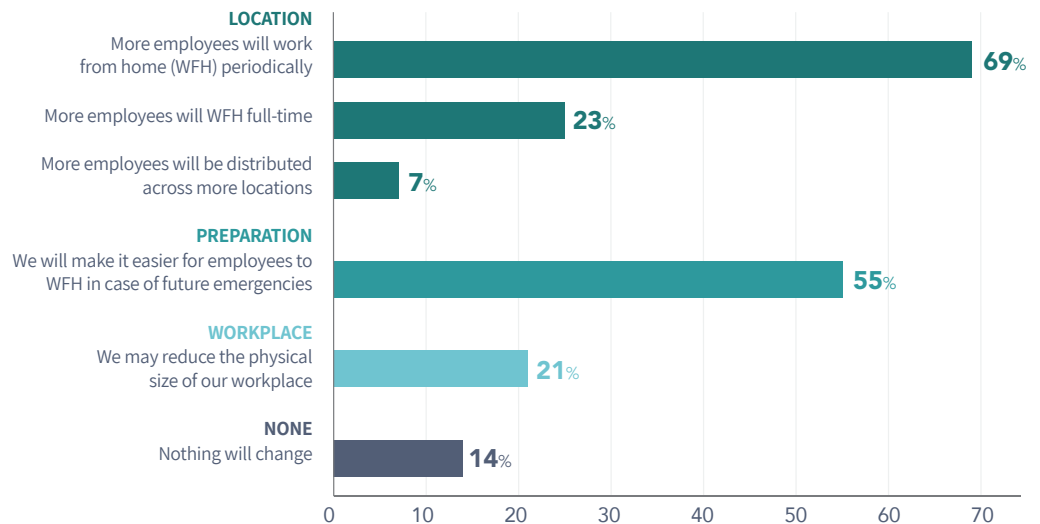
WORKING FROM HOME LARGELY A POSITIVE EXPERIENCE

Survey respondents reported on personal challenges and positive benefits experienced working from home. The results show far more positives than negatives. The top two most commonly reported positives are linked to the benefits of not commuting. More than three times as many people reported being more productive working from home than less productive.



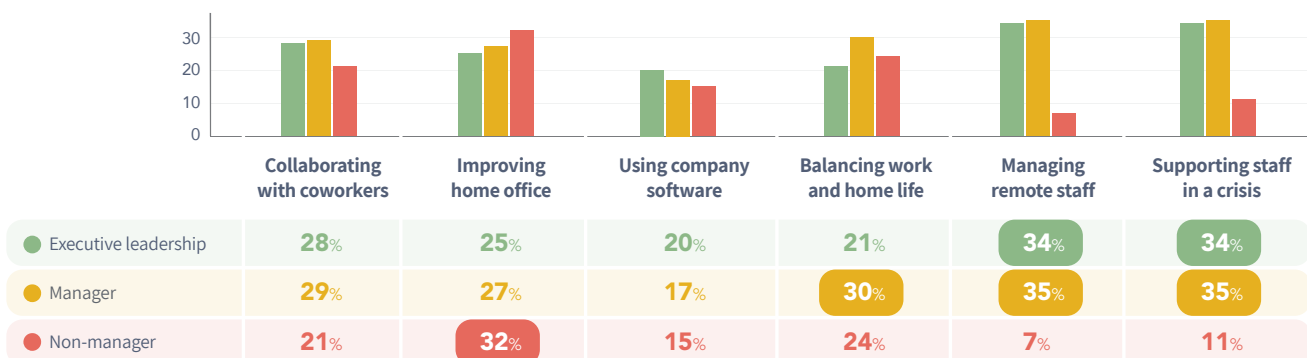
ORGANIZATIONAL PLANS FOR THE FUTURE

Executives with roles influencing workplace policies were asked how the experiences of the past few months would change how their employees work in the future. A substantial majority of executives expect to see a sustained increase in working from home. One in five may reduce the physical size of their workplaces as a result.



MOST HELPFUL TOOLS

The survey asked what types of resources could make it easier for respondents to work from home. The results are broken down by the current job position of the survey respondent with the most noteworthy areas highlighted.



ASAP, Atlantic Station's transportation program, has created special resources to help you with your work from home needs. Find them at:

[ASAP-Plus.com/FlexWork](https://www.asap-plus.com/flexwork)